



Jabra LINK™ 220

USER MANUAL

www.jabra.com

This user guide is published by GN Netcom A/S.

The information in this user guide is furnished for informational use only, is subject to change without notice, and should not be construed as a commitment by GN Netcom A/S. GN Netcom A/S assumes no responsibility or liability for any errors or inaccuracies that may appear in this user guide.

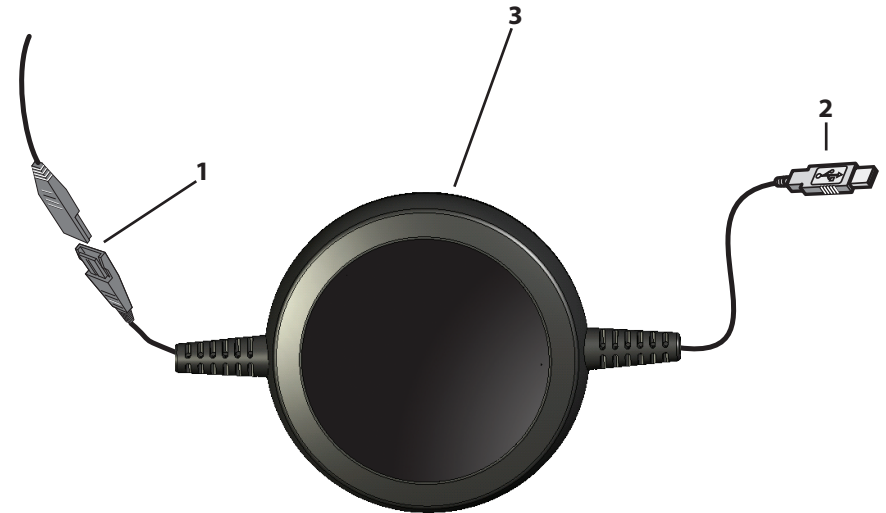
Written and designed at GN Netcom A/S, Lautrupbjerg 7, 2750 Ballerup, Denmark, www.jabra.com.

THANK YOU

Thank you for purchasing the Jabra LINK™ 220 Enabler. We hope you enjoy it! This instruction manual will get you started and ready to make the most of your enabler.

ABOUT YOUR JABRA LINK 220 ENABLER

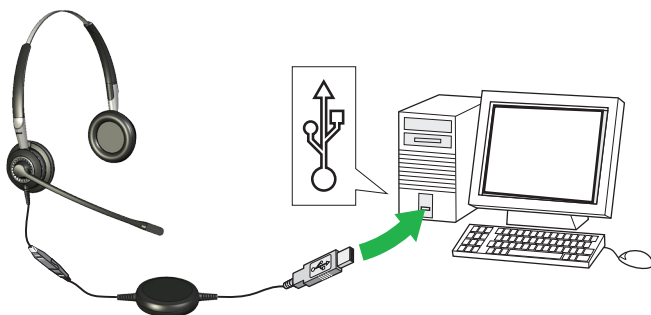
- 1 QD Plug**
- 2 USB plug**
- 3 Enabler**





HOW TO CONNECT ENABLER TO HEADSET

Plug the QD to the QD of any Jabra GN corded headset.



HOW TO CONNECT ENABLER TO PC

Plug the USB plug into a free USB port on your PC.

The first time connected, your PC displays a small pop-up message in the task bar to indicate that a new device has been found. You are now ready to use the enabler.

HOW TO SET THE HEARING PROTECTION LEVEL ON HEADSET

See the section about using Jabra PC Suite below for details.

HOW TO INSTALL AND USE THE JABRA PC SUITE

The Jabra PC Suite is a collection of programs that support and expand your enabler's features. It is available as a free download from www.jabra.com.

Jabra PC Suite enables you to:

- Set the hearing-protection level for the headset.
- Update the firmware for the enabler

INSTALLING THE JABRA PC SUITE

To install the Jabra PC Suite, do the following:

1. Download the Jabra PC Suite installer from www.jabra.com.
2. Run the setup.exe program included with the download. This will install Jabra PC Suite on your computer.
3. Follow the instructions on your computer screen. Installation is very simple and should take just a minute or so. Please note the following as you work through the installation wizard:
 - Jabra PC Suite requires Microsoft .NET Runtime 3.5. If this is not already installed on your PC, then the setup program will automatically download and help you install it (requires an Internet connection).
 - The wizard will ask which components of the Jabra PC Suite you would like to install. Usually, you should install all of them.
 - If you are using Microsoft Windows Vista, you may see a "user account control" message; just click on "Allow" to continue with the installation.
 - At one point, you may see a warning from Windows that the software "has not passed Windows Logo testing." This is expected and does not indicate a problem. You can safely click on the "Continue Anyway" button.

JABRA PC SUITE PROGRAMS

After installing the software, you will have an All Programs > Jabra > Jabra PC Suite folder in your Windows Start menu. It provides links to the following programs:

- **Jabra Control Center**
Enables you to configure your enabler from your PC.
- **Jabra Device Firmware Updater**
Enables you to update the enabler firmware.
- **Jabra Devices Service**

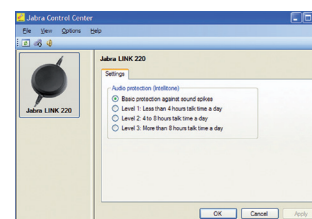
USING JABRA CONTROL CENTER WITH THE JABRA LINK 220 ENABLER

Jabra Control Center is the Jabra Control Suite program that enables you to configure your enabler. To run the program, click on the Windows Start menu and select All Programs > Jabra > Jabra PC Suite.

When the enabler is connected to your computer, you will see the settings that are relevant for that enabler. These settings can be set under the Settings tab as described below.

The Settings Tab

The options on the Settings tab enable you to control the Audio protection (Intellitone).



Use the settings in the Audio protection (Intellitone) area of the Settings tab to set the hearing-protection level of your headset.

Hearing risk is evaluated as a function of both volume and duration. Therefore, the maximum sound level should be lowered as the number of hours you spend using the headset increases. The enabler offer a choice of four protection levels. These features protect your hearing by preventing acoustic shocks and limiting the maximum noise exposure from the headset during your workday. This system is called Intellitone™, which is only available from Jabra. All protection levels (including “none”) also feature Peakstop™, which offers protection against sudden, loud audio spikes.

All three Intellitone levels above (other than “none”) meet and exceed de facto global protection levels, and are compliant with NIOSH standards and EU health and safety codes of 85 dB(A).

In the Audio protection (Intellitone) area, mark the radio button for the Intellitone level that matches the number of hours in which you use the headset each day.

Important: Check your local laws or regulations to find out whether a specific protection level is mandated in your area.

Updating the enabler Firmware

Firmware updates can sometimes improve the performance of your enabler and/or add new features. Visit the Jabra web site to find out if firmware updates are available for any of your Jabra products. You will be able to download the updates from there as they become available.

WARNING: Do not remove the enabler from your PC while the firmware is being updated and make sure your computer will not shut down or go into sleep or standby mode during the process. (Should a disconnection unintentionally occur, please retry from step 1)

To apply a firmware update:

1. If you have not already done so, then attach your enabler to your computer.
2. If you have not already done so, then download the firmware update from Jabra and save it on your hard disk or network in a location where you can see it from your computer.
3. On your PC, use the Start menu to run the firmware-update application of the Jabra PC Suite.
4. Follow the instructions on your screen to identify your enabler model, select the firmware update file and apply it. See also the Jabra PC Suite online help for more details.

TROUBLESHOOTING & FAQs

Q: I cannot hear anything in my headset?

A: Make sure that the enabler is selected as audio device on both the computer in the Control Panel and in the application you are using.

Q: My computer does not detect the enabler?

A: Try to insert the enabler in another USB port.

If you are using Macintosh – Go to System preferences on your computer. When inserted you can select the enabler in the Sound menu under Output and Input.

NEED MORE HELP?

WEB

www.jabra.com

EUROPE

	Phone:	E-mail:
Belgique/Belgium	+ 49 (0)8031 2651 72	techsupport.de@jabra.com
Czech Republic	+ 420 800 522 722	support.cz@gn.com
Danmark	<i>Kontakt venligst din nærmeste forhandler (via følgende link) www.jabra.dk/forhandler</i>	
Deutschland	+ 49 (0)8031 2651 72	techsupport.de@jabra.com
España	+ 34 916 398 064	pedidos@gn.com
France	+ 33 (0)130 589 075	techsupport@gnnnetcom.fr
Italia	+ 39 02 5832 8253	ordini@gn.com
Luxembourg	+ 49 (0)8031 2651 72	techsupport.de@jabra.com
Nederland	+ 49 (0)8031 2651 72	techsupport.de@jabra.com
Norge	+ 47 32 22 74 70	support.no@gn.com
Österreich	+ 49 (0)8031 2651 72	techsupport.de@jabra.com
Poland	+ 48 12 254 40 15 0 801 800 550	support.pl@jabra.com
Russia		techsupport.ru@jabra.com
Suomi	+ 358 204 85 6040	support.fi@gn.com
Sverige	+ 46 (0)8 693 09 00	info@jabra.se
United Kingdom	+ 44 (0)1784 220 172	info_uk@jabra.com

USA AND CANADA

Technical support: techsupport@gnnetcom.com

Information: info@jabra.com

Phone (toll-free in USA and Canada):

Canada	1-800-489-4199
USA	1-800-826-4656

ASIA/PACIFIC

Information: support.apac@jabra.com
callto:sip:support.asia@gn.com

Phone:

Australia	1-800-083-140 (Toll Free)
China	+ 86-21-5836 5067
Hong Kong	800-968-265 (Toll Free)
India	000-800-852-1185 (Toll Free)
Indonesia	001-803-852-7664
Japan	+ 81-3-3242-8572
Malaysia	1800-812-160 (Toll Free)
New Zealand	0800770 114 (Toll Free)
Philippine	1800-765-7022 (ETPI) 1800-1855-0144 (PLDT)
Singapore	800-8523-794 (Toll Free)
Taiwan	0080-186-3013 (Toll Free)
Thailand	001-8008526446 (Toll Free)

MIDDLE EAST/AFRICA

E-mail: support.mea@gn.com

CERTIFICATION AND SAFETY APPROVALS

CE

This product is CE marked according to the provisions of the R & TTE.

Directive (99/5/EC). Hereby, GN, declares that this product is in compliance with the essential requirements and other relevant provisions of Directive 1999/5/EC. For further information please consult <http://www.jabra.com>.

Within the EU this device is intended to be used in Austria, Belgium, Cyprus, Czech Republic, Denmark, Estonia, Finland, France, Germany, Greece, Hungary, Ireland, Italy, Latvia, Lithuania, Luxembourg, Malta, Poland, Portugal, Slovakia, Slovenia, Spain, Sweden, The Netherlands, United Kingdom, and within EFTA in Iceland, Norway and Switzerland.

FCC

This device complies with part 15 of the FCC Rules. Operation is subject to the following two conditions: (1) This device may not cause harmful interference, and (2) this device must accept any interference received, including interference that may cause undesired operation. Users are not permitted to make changes or modify the device in any way. Changes or modifications not expressly approved by Jabra will void the user's authority to operate the equipment. This equipment has been tested and found to comply with the limits for a Class B digital device, pursuant to part 15 of the FCC Rules. These limits are designed to provide reasonable protection against harmful interference in a residential installation. This equipment generates, uses and can radiate radio frequency energy and, if not installed and used in accordance with the instructions, may cause harmful interference to radio communications. However, there is no guarantee that interference will not occur in a particular installation. If this equipment does cause harmful interference to radio or television reception, which can be determined by turning the equipment off and on, the user is encouraged to try to correct the interference by one or more of the following measures:

- Reorient or relocate the receiving antenna.
- Increase the separation between the equipment and receiver.
- Connect the equipment into an outlet on a circuit different from that to which the receiver is connected.
- Consult the dealer or an experienced radio/TV technician for help.
- The user must place the base 8" (20cm) (need to verify if this is true) or more from any personnel in order to comply with FCC RF exposure requirements.

Industry Canada

Operation is subject to the following two conditions: (1) This device may not cause interference and (2) This device must accept any interference, including interference that may cause undesired operation of the device. The term "IC:" before the certification/registration number only signifies that registration was performed based on a Declaration of Conformity indicating that Industry Canada technical specifications were met. It does not imply that Industry Canada approved the equipment.

GLOSSARY

Jabra PC Suite

A GN Netcom software communication control center.

DFU

Device Firmware Update

Firmware

The software that is embedded in a hardware device, for example the Jabra LINK 220 enabler. Like software, firmware is a computer program, which is executed by a computer.

IP telephony

(Voice over Internet Protocol) The routing of internet voice conversations or through other IP-based networks.

Jabra

A BRAND BY

GN Netcom

JABRA® IS A REGISTERED TRADEMARK OF GN NETCOM A/S
WWW.JABRA.COM

MADE IN CHINA



www.jabra.com