

plantronics®

**LEARN
MORE**

**M25™ & M55™
Bluetooth® Headset**

TAKE A GOOD LOOK

A CALL BUTTON

- Take/End a call

M25:

Take a call or end it (1 tap)

Reject a call (1-second press)

M55:

Take a call (1 tap or say "Answer")

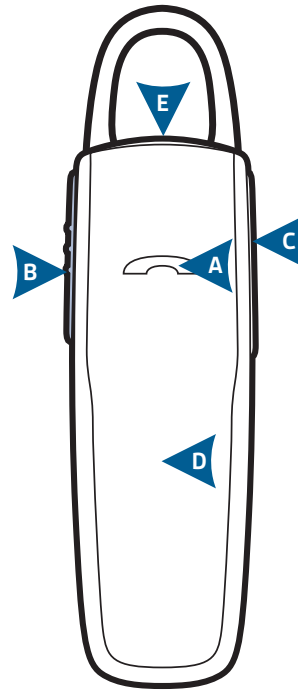
Reject a call (1-second press or say "Ignore")

End a call (1 tap)

- Redial (2 taps)
- Initiate phone's voice-dialing (2-second press until tone is heard)
- Reconnect lost Bluetooth® connection (1 tap if the headset doesn't automatically reconnect)
- Activate pairing mode after initial set up (press until LED flashes red/white)
- Exit DeepSleep™ mode (1 tap)

B POWER SWITCH

- On (slide back to reveal green)
- Off (slide forward to cover green)



Your headset may look slightly different than the illustration, but will still work as described.

C VOLUME BUTTON

- Volume presets (1 tap per level change)

D INDICATOR LIGHT (LED)

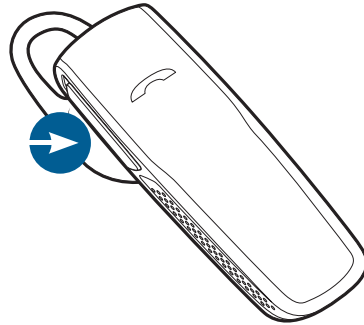
- Charging (solid red until charged)
- Very low battery (3 red flashes at powering on)
- Pairing mode (repeating red/white flashes)

E MICRO USB CHARGING PORT

- Use with an AC wall charger:
 - 1 hour before first use
 - 2 hours (full charge)
- Do not use headset while charging

Be safe! Please read the safety guide for important safety, charging, battery and regulatory information before using your new headset.

CONNECT TO YOUR PHONE



“Pairing” is the set-up process of introducing your headset to your phone. Before using your headset for the first time, you must pair it with your Bluetooth-enabled phone.

“Multipoint” lets you pair this headset with two phones so you can answer a call from either phone.

1. READY

First time, right out of the box:

Slide the power switch to turn the headset on. The LED flashes red/white to indicate pairing mode.

Pair new or second phone:

Turn on headset. Press Call button until the LED flashes red/white for pairing mode.



2. SET

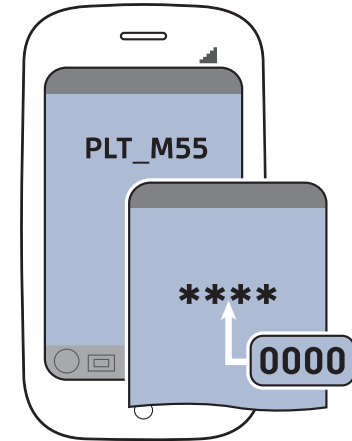
Activate the Bluetooth feature on your phone, then use phone menus to “add,” “search” or “scan” new Bluetooth devices.

Phones have different menus to select from, for example:

iPhone: Settings > General > Bluetooth > On (starts the search for devices)

BlackBerry® smartphone: Settings/options > Bluetooth: On > Search for devices

Android™: Settings > Wireless & Networks > Bluetooth: On > Scan for devices.



3. CONNECT

Select “PLT_M25-M29” or “PLT_M55” from the list of Bluetooth devices shown on your phone.

If phone asks for a passcode, enter four zeros (0000). You may see **** on screen.

Some phones also ask to confirm headset connection after pairing.

Headset LED will stop flashing red/white once successfully paired/connected.

You can now make a call using your phone’s keypad or voice-dialing feature.

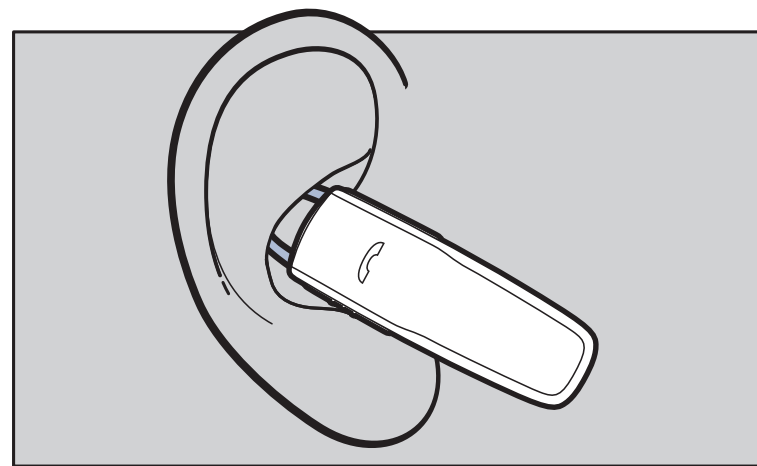
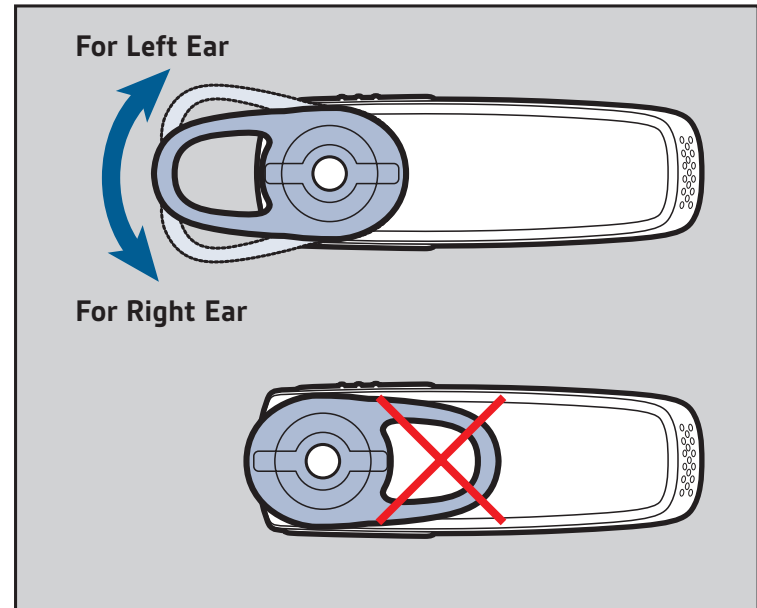
TRY IT ON

The loop of the gel eartip tucks into the back curve of your ear for a stable fit.

Try on the headset. The eartip is positioned to suit most people, but you may want to rotate it to best fit your left or right ear.

The gel eartip clicks into grooves on the speaker, so that the eartip doesn't move out of place during use.

For best voice pickup, always check that the headset points towards the corner of your mouth.



TIPS

Stay near your phone

Bluetooth has a working “range” of up to 10 meters (33 feet) between the phone and headset before audio degrades and the connection is lost.

Try DeepSleep™

If you leave your headset powered on but out of range from your paired phone for more than 90 minutes, your headset will conserve its battery power by entering into DeepSleep mode.

This power-saving mode keeps your headset charged for up to 5 months so it’s ready when you need it.

Once back in range with your phone, tap the Call button to exit DeepSleep mode. If your phone is also ringing, tap the Call button again to answer your call.

Know how to reconnect

Your headset tries to reconnect a lost connection. If it can’t, then tap the Call button once or manually reconnect via the phone’s Bluetooth device menu.

If your headset remains out of range for more than 90 minutes, the DeepSleep mode will activate.

Turn off voice commands (M55 only)

When prompted by the headset, you can just say “answer” or “ignore” to incoming calls – no need to press any buttons.

If you prefer not to use the voice command feature, you can disable it and just use the Call button.

To disable: with the headset powered on, simultaneously press the Call button and Volume button until you see the white LED flash twice.

To reactivate the feature: just repeat the steps and you will again see the white LED flash twice.

*Voice commands are only available in English.

Use an iPhone to check headset battery

An icon representing the battery level of your headset is automatically displayed on-screen beside the phone’s battery level icon.

Listen to music and more

If your phone also has the Bluetooth “A2DP” stereo music feature, then your music, podcasts, favorite internet radio and other streaming audio can be heard through this headset.

TIPS

Use Multipoint one call at a time

With multipoint and two phones paired, it's easy to answer calls from either phone.

When already on a call, you will hear a ringtone notification of the incoming call from the second paired phone.

To answer a second call from the other phone, you must end the current call (tap Call button) so new call automatically answers.

If you choose not to answer the second call, it will go to voicemail.

Listen to the voice alerts (English only)

This headset automatically announces various status alerts:

- Power On or Off
- Talk-time remaining (in hours)
- Battery Low
- Recharge Headset
- Phone 1 connected
- Phone 2 connected
- Lost connection
- No phone is connected
- Pairing
- Pairing successful
- Pairing incomplete, restart headset
- Volume Maximum
- Redial
- Answer or ignore? (M55 only)

SPECIFICATIONS

Talk time	Up to 11 hours
Standby time	Up to 16 days
DeepSleep Mode	Up to 150 days
Operating distance (range)	Up to 10 meters (33 feet), Class II
Headset weight	8 grams
Charge connector	Micro USB charging
Battery type	Rechargeable non-replaceable lithium ion polymer
Charge time (maximum)	2 hours for full
Power requirements	5V DC – 180mA
Bluetooth version	Bluetooth v3.0
Bluetooth profiles	A2DP, Hands-Free (HFP) Profile 1.6 and Headset (HSP) Profile 1.2
Operating temperature	0 - 40°C (32°F - 104°F)
Storage temperature	0 - 40°C (32°F - 104°F)
Charging temperature	0 - 40°C (32°F - 104°F)

NEED MORE HELP?

en

Plantronics Ltd
Royal Wootton Bassett, UK
Tel: 0800 410014

ar

منطقة الشرق الأوسط
لمزيد من المعلومات:
+44 (0)1793 842443*

cs

Czech Republic
+44 (0)1793 842443*

da

Danmark
Tel: 80 88 46 10

de

Plantronics GmbH
Köln, Deutschland
Kundenservice:
Deutschland 0800 9323 400
Österreich 0800 242 500
Schweiz 0800 932 340

el

Για περισσότερες
πληροφορίες:
+44 (0)1793 842443*

es

Plantronics Iberia, S.L.
Madrid, España
Tel: 902 41 51 91

fi

Finland
Tel: 0800 117095

fr

Plantronics Sarl
Noisy-le-Grand
France
Tel: 0800 945770

ga

Plantronics BV
Regus House
Harcourt Centre
Harcourt Road
Dublin 2, Ireland
Service ROI: 1800 551 896

he

למידע נוסף, בקר באתר:
+44 (0)1793 842443*

hu

További információk:
+44 (0)1793 842443*

it

Plantronics Acoustics
Italia Srl, Milano, Italia
Numero Verde: 800 950934

nl

Plantronics B.V.
Hoofddorp, Nederland
NL 0800 7526876
BE 0800 39202
LUX 800 24870

no

Norge
Tel: 80011336

pl

Aby uzyskać więcej informacji:
+44 (0)1793 842443*

pt

Portugal
Tel: 0800 84 45 17

ro

Pentru informații
+44 (0)1793 842443*

ru

Дополнительная
информация:
8-800-200-79-92
+44 (0)1793 842443*

sv

Sverige
Tel: 0200 21 46 81

tr

Daha fazla bilgi için:
+44 (0)1793 842443*

*Support in English

plantronics.com/support

NEED MORE HELP?

Safety information:

see the separate “For Your Safety” booklet

2-year limited warranty details:

plantronics.com/warranty

Plantronics B.V.

Scorpius 140

2132 LR Hoofddorp

Netherlands

plantronics.com/support

© 2012 Plantronics, Inc. All Rights Reserved. Bluetooth is a registered trademark of Bluetooth SIG, Inc. and any use by Plantronics is under license. All other trademarks are the property of their respective owners. Patents US 5,712,453; Patents Pending. 87608-07 (04-12) EN-GB



EEE Yönetmeliğine Uygundur