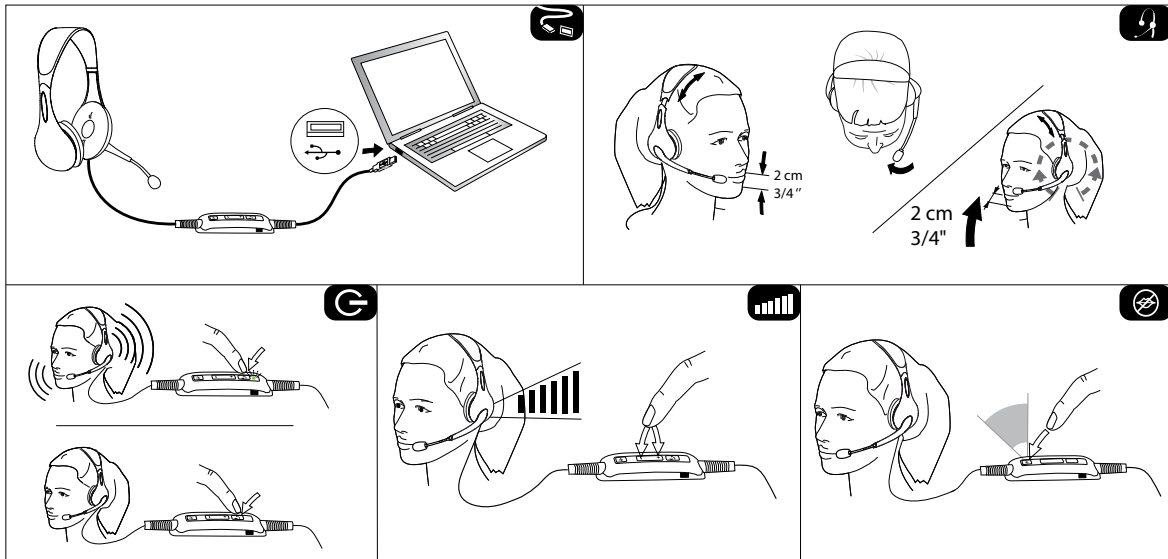


Jabra®

Jabra UC VOICE™ 150 Quick Start Guide



To get the latest updates to your new Jabra UC VOICE™ 150 Quick Start Guide headset, register your product at www.jabra.com/register

A BRAND BY

GN Netcom

JABRA® IS A REGISTERED TRADEMARK OF GN NETCOM A/S

www.jabra.com

81-03477 A

NEED MORE HELP?

EUROPE

Belgique/Belgium	+ 49 (0)8031 2651 72
Czech Republic	+ 420 800 522 722
Danmark	Kontakt venligst din nærmeste forhandler (via følgende link) www.jabra.dk/forhandler
Deutschland	+ 49 (0)8031 2651 72
España	+3 4 916 398 064
France	+ 33 (0) 130 589 075
Italia	+ 39 02 5832 8253
Luxembourg	+ 49 (0)8031 2651 72,
Nederland	+ 49 (0)8031 2651 72
Norge	+ 47 32 22 74 70
Österreich	+ 49 (0)8031 2651 72
Poland	0-801-800-550; + 48 12 254-40-15
Russia	techsupport.ru@jabra.com
Suomi	+ 358 204 85 6040
Sverige	+ 46 (0)8 693 09 00
United Kingdom	+ 44 (0)1784 220 172

MIDDLE EAST/AFRICA

E-mail Support: support.mea@gm.com

USA & CANADA

Canada	1-800-489-4199
USA	1-800-826-4656

MADE IN CHINA
MODEL: HSC010

A BRAND BY
GN Netcom

GN Netcom A/S
Lautrupbjerg 7
DK-2750 Ballerup
Denmark

ASIA

Australia	1-800-636-086 (local distributor)
China	+ 86-21-5836 5067
Hong Kong	800-968-265 (Toll free)
India	000-800-852-1185 (Toll free)
Indonesia	001-803-852-7664
Japan	+ 81-3-5297-7976
Malaysia	1800-812-160 (Toll free)
New Zealand	0800-447-982 (Toll free)
Philippines	1800-765-7022 (ETPI)
Singapore	800-8523-794 (Toll free)
Taiwan	0080-186-3013 (Toll free)
Thailand	001-8008523-794 (Toll free)
Vietnam	support.asia@gm.com

©2011 GN Netcom A/S. All rights reserved. Jabra® is a registered trademark of GN Netcom A/S. All other trademarks included herein are the property of their respective owners. The Bluetooth® word mark and logos are owned by the Bluetooth SIG, Inc. and any use of such marks by GN Netcom A/S is under license. (Design and specifications subject to change without notice).

PATENTS AND DESIGN REGISTRATION PENDING INTERNATIONAL
REGISTER YOUR JABRA AT JABRA.COM/REGISTER-FORNEWS,SUPPORT
AND COMPETITIONS
www.jabra.com

